



SNU
SISTER NIVEDITA
UNIVERSITY



**REINVENT YOURSELF
BEYOND BOUNDARIES**

A portrait of Sister Nivedita, a woman with short, dark, wavy hair, wearing a white high-collared dress with a dark belt. She is holding a string of dark beads. The background is a dark, textured brown.

Sister Nivedita born Margaret Elizabeth Noble

(28 Oct 1867 - 13 Oct 1911)

BLESSINGS TO NIVEDITA.

The mother heart, the heart, is
the heart of the mother heart
the sacred flame and strength of the
the sacred flame, glowing, free,
all this is yours, and many more,
the ancient soul would dream in you.
be true, to the future, to
the mother, to the friend, to the soul.

With the blessings of

Vivekananda

Swami Vivekananda



Satyam Roychowdhury

Chancellor, Sister Nivedita University
Co-founder & Managing Director, Techno India Group

FROM CHANCELLOR'S DESK

Sister Nivedita University, a visionary project weaved into reality brick by brick, is developing with time and unflinchingly striving to provide a platform for its students. The university, which began its journey as the state's youngest university three years ago, has already transformed itself into a pioneering seat of learning via its unwavering commitment towards edification. It is more than a University. It is a platform that provides students with the tools they need to take on new challenges.

We firmly think that education is India's comparative advantage in the global economy. Its integration into the globalisation process has pushed us to develop programmes that are responsive to the world's changing demands. Our commitment to offering high-quality education is unwavering and we are always looking for innovative ways to provide our students with the finest possible educational opportunities. I am confident that, together, we will continue to achieve greater heights in future.



Professor (Dr.) Dhrubajyoti Chattopadhyay

Vice Chancellor, Sister Nivedita University

FROM VICE CHANCELLOR'S DESK

Education gives knowledge to a person which in turn translates into wisdom. The ability to implement knowledge into a productive process serves mankind. Sister Nivedita University with its brilliant faculty team will give the students the required expertise to gain that knowledge. But in order to transform that knowledge, the students are required to develop their own value chain.

I would recommend everyone to develop their extra-curricular skills and also understand the application of your conceptual learning. I would also want you all to follow your heart and passion. Do not choose a subject only because of lucrative job offers, but only if you have the passion to follow it. Money does not work during the dull times, it is the passion which keeps you going.

My profession has given me the privilege to interact with students from various timelines, and all the students had one thing in common – they chose a field which they liked. Utilise the campus resources, interact with faculty members to understand your potentials and strengths, and I am sure the intellectual ambience of our campus will help in converting your efforts into a success story. And above all, be a good human being.



The Inaugural ceremony of the 90th Nikhil Bharat Banga Sahitya Sammelan at SNU.



Victory Mashaal reaches SNU to celebrate Swarnim Vijay Varsh .



SNU receives 'Best IT ENABLED LEARNING' award from Education World -India's 4th ,West Bengal's 1st,Kolkata's 1st

Sister Nivedita University is a place not only of learning but also of fun, culture, lore, literature and many such activities.



VISION

- To **encourage** continuous innovation in education
- To **support** creativity, entrepreneurship and research
- To have a **transformative impact** on the society through inclusiveness

VALUES

- **Integrity** - to act ethically, honestly and with fairness
- **Respect** - to listen, value and acknowledge
- **Courage** - to lead, take responsibility and question
- **Excellence** - to strive for distinction
- **Impact** - to empower, enable and inspire

MISSION

- To foster an educational environment comprehensive in terms of both knowledge dissemination and curriculum design.
- To develop an educational environment that is accessible to all and not just to a privileged few.
- To develop a community based on quality faculty members, research, effective pedagogy and an enquiring student population.
- To strengthen cultural understanding through opportunities, to study languages, cultures, arts and the implications of social, political, economic and technological change through the encouragement of study and research.



BEYOND ACADEMICS

Everything is not possible in theory, until it is put in practice. What we learn with pleasure we never forget.





With a well-designed campus that boasts of teaching and learning facilities as per the global standards, the university has an ergonomic and world-class infrastructure. The university is the seat of culture that encourages innovation through strong digital connectivity and industry connect. Well-equipped smart classrooms with smart boards and digital learning facilities help the faculty to impart education in an interactive manner. The university also has well equipped laboratories required for research and computer studies. This enhances the learning process through specialised, technical and practical training.

A VIBRANT & TECHNOLOGICALLY ENABLED CAMPUS

- ✧ Wi-Fi Enabled Campus
- ✧ Smart Classrooms
- ✧ Laboratories
- ✧ Conference Hall
- ✧ Air-Conditioned Auditorium
- ✧ Seminar Room
- ✧ Well-Stocked Library
- ✧ Gymnasium
- ✧ Yoga Room
- ✧ Canteen
- ✧ Medical Facility
- ✧ CCTV Surveillance
- ✧ Music Room
- ✧ Cafeteria
- ✧ Amphitheatre
- ✧ Studio
- ✧ Mac Lab
- ✧ Radio-Studio/Radio-Room
- ✧ Moot Court



Digital teaching and learning process through the robust Learning Management System (LMS) of Sister Nivedita University

www.snuniv.ac.in



INDUSTRY STANDARD INNOVATION CENTER POWERED BY:



Microsoft

SONY



INDUSTRY CONNECT



INDUSTRY PARTNERS



Confederation of Indian Industry



PROFESSIONAL ACADEMIC AFFILIATION



HAVEN OF EDUCATION

It's a multi-cultural university in a diverse, vibrant city. The course is dynamic with the option to choose two subjects for specialisation. It was something I had always wanted to do and learn.

The diversity of modules really broadened my thinking. The projects and assignments that were assigned to me, taught me a lot about marketing – not just in theory, but also in practice. It was the best three years of my life! The opportunities I had in there, the things I got to do, and the time I had spent with my friends were the best moments that I will cherish forever.

Samiha Mukherjee
Student, SNU



“

It is my immense luck and fortune to be a part of SNU. It leaves no stone unturned to shape one's future. Today I am placed in one of the best firm in the Industry ..all due to SNU

”

Prerona Munshi
Student,

Dept. of Journalism and Mass Communication, SNU

UNIVERSITY PROGRAMMES

School of Engineering

Department of Computer Science & Engineering

- B.Tech in Computer Science & Business System(TCS-Industry Integrated) • B.Tech in Computer Science and Engineering
- B.Tech in Computer Science and Engineering (Artificial Intelligence and Machine Learning) • B.Tech in Computer Science and Engineering (IoT, Cybersecurity and BlockChain Technology) • Diploma in Computer Science Engineering
- M.Tech in Computer Science & Engineering • Ph.D in CSE
- B.Sc. in Computer Maintenance & Repair • B.Sc.in Computer Science & Coding • B.Sc. in Quantative Finance • BCA • MCA

Department of Electronics & Communication Engineering

- M.Tech in Electronics and Communication Engineering
- M.Tech in Electronics and Communication Engineering (Embedded System & Computer Vision) • Ph.D in ECE

Department of Robotics and Automation Engineering

- M.Tech in Robotics and Automation Engineering

Department of Civil Engineering

- M.Tech in Structural Engineering

School of Architecture and Planning

Department of Architecture & Town Planning

- B.Arch • Diploma In Interior Design

School of Natural Sciences

Department of Chemistry

- B.Sc. (Hons.) in Chemistry • M.Sc. in Chemistry • Ph.D in Chemistry • M.Sc. in Chemistry

Department of Statistics

- B.Sc. (Hons.) in Statistics • M.Sc. in Statistics • Ph.D in Statistics

Department of Mathematics

- B.Sc. (Hons.) in Mathematics • M.Sc. in Applied Mathematics
- Ph.D in Applied Mathematics

Department of Physics

- B.Sc. (Hons.) in Physics • M.Sc. in Physics • Ph.D in Physics

School of Agricultural Sciences

Department of Agricultural Economics • Department of Agronomy
Department of Horticulture • Department of Plant Pathology
Department of Soil Science

- 4 years B.Sc (Hons.) Agriculture

School of Health Science and Translational Research

Department of Allied Health Sciences

- B.Sc. in Critical Care Technology (CCT) • B.Sc. in Medical Laboratory Technology (BMLT) • B.Sc. in Medical Radiography & Imaging Technology (BMRT) • BSc in Operation Theatre Technology(OTT) • B.Sc. in Optometry (4 years)

Department of Nutrition & Dietetics

- B.Sc. (Hons.) in Applied Nutrition and Dietetics
- M.Sc. in Nutrition & Dietetics

Department of Psychology

- B.Sc. (Hons.) in Psychology • M.Sc. in Applied Psychology
- Ph.D. in Psychology

Departement of Biotechnology

- B.Sc. (Hons.) in Biotechnology • M.Sc. in Biotechnology
- Ph.D in Biotechnology

Department of Microbiology

- B.Sc. (Hons.) in Microbiology • M.Sc. in Microbiology
- Ph.D in Microbiology

School of Nursing

Department of Nursing

- B.Sc. in Nursing • General Nursing & Midwifery (GNM)
- Post Basic B.Sc. in Nursing

School of Business, Commerce and Economics

Department of Commerce

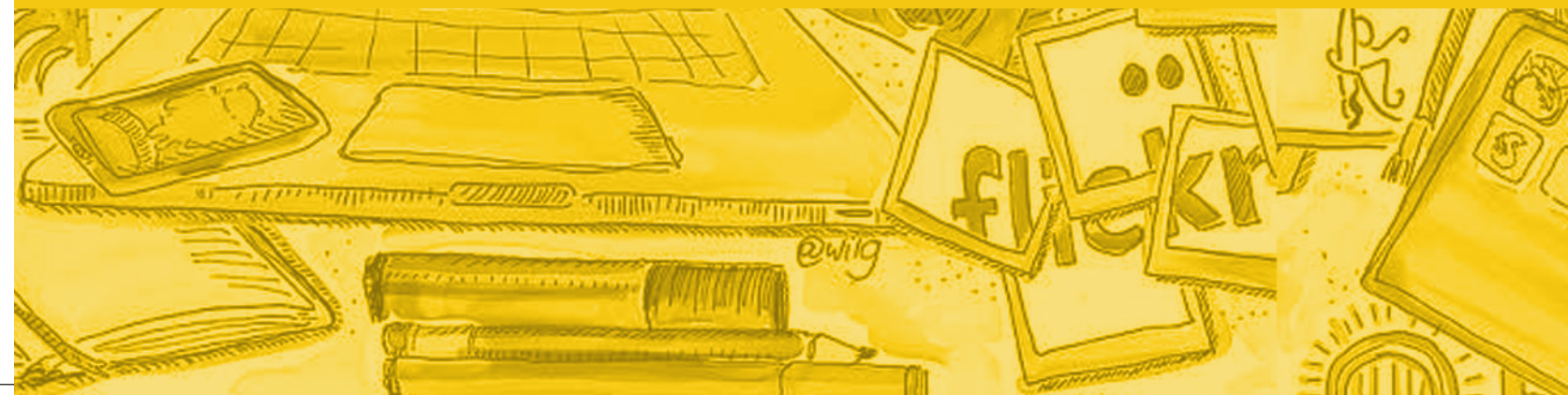
- B.Com. (Hons.) (Business Process Services) (TCS Industry Integrated) • B.Com. (Hons.) in Accounting and Finance
- B.Com. (Hons.) in Banking, Insurance and Financial Services • B.Com. (Hons) in Banking and Finance (Industry Integrated -ICA) • M.Com • Ph.D in Commerce

Department of Management

- BBA • BBA (Financial Markets - BSE Industry Integrated)
- BBA in Finance & Marketing (Industry Integrated -ICA)
- BBA in Business Process Management - (TCS Industry Integrated) • BBA (Logistics & Supply Chain Management)
- BBA in Digital Marketing • BBA in Healthcare & Hospital Management • BBA in Sports Management • MBA (Healthcare Management and Hospital Administration)
- MBA (HR/Marketing/ Finance) • MBA (Logistics & Supply Chain Management) • MBA in Sports Management
- Ph.D in Management

Department of Economics

- B.Sc. (Hons.) in Economics
- M.Sc. in Economics
- Ph.D in Economics



School of Humanities & Social Sciences

Department of English

- B.A. (Hons.) in English • M.A. in English • Ph.D in English

Department of History

- B.A. (Hons.) History

Department of Political Sciences

- B.A. (Hons.) in Political Science

Department of Sociology

- B.A. (Hons.) in Sociology
- M.A. in Sociology
- Ph.D in Sociology

School of Media Communications Fine Arts & Design

Department of Mass Communication & Journalism

- B.A. (Hons.) Journalism and Mass Communication
- M.A. in Mass Communication & Journalism
- Ph.D in Mass Communication & Journalism
- B.Sc. in Animation & Graphics
- M.Sc. in Animation & Graphics
- 1 Year Post Graduate Diploma in Graphics and Animation
- Certificate course in Multimedia and Animation

Department of Design

- B. Design (Fashion Design/Product Design/Communication Design)

Department of Fine Arts

- BFA • MFA • Ph.D in Fine Arts

School of Hospitality and Tourism

Department of Hospitality and Tourism

- B.A. (Hons.) International Hotel Management and Tourism Administration
- M.Sc. in Hospitality & Tourism Administration Management
- MBA in Hospitality and Tourism Management

School of International Languages

Department of International Languages

- Diploma in foreign language - Spanish, Japanese, French, German
- Certificate Courses - Beginners, Advanced

School of Performing Arts

Department of Performing Arts

- B.A. (Hons.) in Performing Arts (Music) • B.A. (Hons.) in Performing Arts (Dance) • B.A. (Hons.) in Performing Arts (Drama) • Ph.D in Performing Arts

School of Law

Department of Law

- B.Com LLB (Hons) • BA LLB (Hons.) • BBA LLB (Hons.)
- LL.M (with Specialization in Business and Corporate Law, International Law and Criminal Law) • LLB • Ph.D in Law

School of Pharmacy

Department of Pharmacy

- B. Pharm • D. Pharm





RESEARCH PROGRAMMES AT SNU

- ✧ Joint Ph.D. Programme with International Institute of Innovation & Technology, New Town, Kolkata on Transnational Research & Public Health.
- ✧ Joint research activities with Jadavpur University & Presidency University, Kolkata.
- ✧ Setting up the Centre for Inter-disciplinary Research. 3 labs have been established.
- ✧ Joint Research collaboration with Department of Biotechnology & Drug Discovery, and Department of Applied Chemistry & Biotechnology, Okayama University, Japan.
- ✧ Joint workshops and exhibitions organised by Department of Fine Arts & Design, SNU and Italian universities. Joint activity by Department of Hospitality; Tourism Management with Italian institutes.
- ✧ Organizing Joint International and National Research webinars with both Universities and Research Institutes. Approximately 23 webinars have been conducted so far.
- ✧ Joint International research proposals submission under the umbrella of Department of Global Affairs & International Relations.
- ✧ Submission of Projects on Department of Large Area High Efficiency N-PERT Crystalline Silicon Solar Cell by Centre of Excellence, SNU to MNRE.
- ✧ 5 research projects submitted to DST, Government of India by the faculties from Biotechnology, Microbiology, Applied Nutrition, Chemistry and Physics.
- ✧ Publications of Faculty members are approximately 100 in the last academic session out of which there are 71 National publications and 29 International publications.



In line with the vision of creation, advancement and dissemination of knowledge in an interdisciplinary context, research in diverse academic fields is intrinsic to the education process at Sister Nivedita University.

As an institution of holistic learning, Sister Nivedita University lays significant focus on the role and status of research as the central theme of all academic activity. It is the pursuit of research excellence that determines and shapes the academic aspirants.

Sister Nivedita University hosts an extensive network of highly skilled research faculty and scientists, graduate students, post-doctoral fellows and collaborators. The University is working towards advancing research by funding growth, creating unique research training opportunities, and increasing its competitiveness for externally funded programmes, projects and grants.

Some associations with Global Universities and Institutions for Research

- ✧ ESIGELIC (French), one of the few French schools to have its own research centre
- ✧ Westphalian University of Applied Sciences, Germany
- ✧ Manipal International University, Malaysia
- ✧ Stamford University, Dhaka
- ✧ Okayama University, Japan
- ✧ Johns Hopkins University, USA
- ✧ University of Valladolid, Spain



SEMINAR HALL AND AMPHITHEATRE

Sister Nivedita University houses state-of-the-art conference halls and a fully-equipped auditorium-cum-seminar hall that act as a common ground for regular interfaces, conferences and other special events. The vibrant amphitheatre is utilised by students for dance, drama, skits and other performances.



HOSTEL

Sister Nivedita University has eight hostels (AC/non-AC) with separate facilities for boys and girls. Professional wardens and tight security arrangements ensure a safe stay, allowing students to focus on academics. Internet facility and library is available in all the hostels. The common rooms are well-equipped with TV, indoor games and other recreational facilities.

CRICKET ACADEMY

The SNU Cricket Academy was inaugurated by former Bengal Cricketer and Ranji Trophy winner Sambaran Banerjee, in the presence of Satyam Roychowdhury, Chancellor of Sister Nivedita University.



LIFE SKILL AND FITNESS CENTER

Balance between mind, body and spirit is a powerful tool to keep the young minds focused. SNU houses a well-equipped gym and a yoga cum dance room with expert trainers for the use of both students and faculty members.

UNIVERSITY DIGITAL STUDIO

SNU is well-equipped with a Digital Studio that provides a platform for creative thinkers to come together to exchange ideas, explore processes, methods, and develop new art forms. The digital studio as well as the radio station serve as a creative space where students are given hands-on training on audio and video recording, editing and sound mixing. The digital studio is also utilised for broadcasting live audio including interviews of celebrity guests. The Digital Studio was inaugurated by Prof. Anil D. Sahasrabudhe, Chairman of AICTE.

CENTRAL LIBRARY

The library offers a wide range of study materials – from traditional books to multimedia and networked information from around the world. The library contains more than 50,000 books along with national and international journals and periodicals. The University also has a repository of online journals and databases.



ADVANCED NURSING LAB

SNU Nursing Institute consists of well-equipped laboratories with models, mannequin, modern equipments and study materials, according to the requirements of Indian Nursing Council and West Bengal Nursing Council. Students are given hands-on practice, training under the supervision of experts before their clinical posting.

MOOT COURT

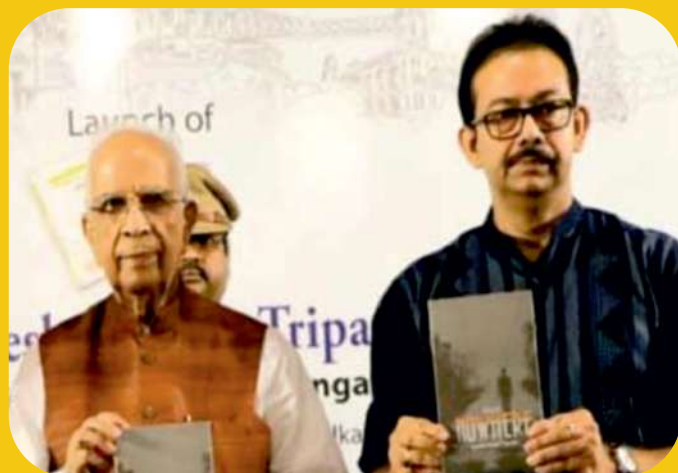
SNU has a Moot Court where students take part in simulated court or arbitration proceedings, usually involving memoranda and oral argument. The Moot Court was inaugurated by Justice Chittatosh Mookerjee, former Chief Justice of the Calcutta High Court and Bombay High Court and Prof. Anil D. Sahasrabudhe, Chairman of AICTE.





SAKURA SCIENCE PLAN

Faculty members and dignitaries from Sister Nivedita University & Techno India Group were invited to the 'SAKURA Science Plan', funded by the Government of Japan, and to the 11th International Symposium on 'Future Technology Creating Better Human Health and Society' organised by Okayama University, Japan, an educational partner University of SNU.



LAUNCH OF SNU PRESS FROM RAJ BHAVAN

SNU PRESS, the publication division of Sister Nivedita University was launched on 27th June, 2019. The first two books were officially released on 2nd of July, 2019 at the Raj Bhavan, Kolkata in the presence of the then Honourable Governor of West Bengal, Shri Keshari Nath Tripathi.



LAMP LIGHTING CEREMONY

Oath taking and Lamp lighting ceremony by the Nursing Students of the School of Nursing, Sister Nivedita University at Techno -Arts Acre auditorium.



SISTER NIVEDITA UNIVERSITY PROMOTES INDUSTRY ALLIANCE

SNU joined hands with SSC NASSCOM, Pine Biotech, Tickerplant Ltd., Data Science Foundation, eLitmus and Innovation Next in July, 2019 at the university auditorium. Prof. Anil D. Sahasrabudhe, Chairman of AICTE, Justice Chittatosh Mookerjee, former Chief Justice of the Calcutta High Court and Bombay High Court, Dr. Sandhya Chintala, Executive Director, IT, ITES Sector Skill Council & VP NASSCOM were present.



SNU SAMMAN (NATYA-SHASTRA)

SNU takes pride in bringing these stalwarts together on one stage for the first time. SNU MIC- UP (Theatre Club) was inaugurated by Rudraprasad Sengupta, Bibhash Chakraborty, Debshanker Halder, Soumitra Mitra and Uma Jhunjunwala for their contribution to theatre arts. We were overwhelmed to present The SNU SAMMAN to these legends



MOU WITH BANGLADESH UNIVERSITY

Techno India Group and Sister Nivedita University (SNU) ink an MoU with Bangladesh University of Engineering & Technology (BUET) for overall academic collaboration facilitating student and faculty exchange programs, and overseas inter-university cross functioning at Dhaka.

INTERNATIONAL COLLABORATION

FRANCE

ISEP
ESIGELEC
RENNES SCHOOL
OF BUSINESS



POLAND

POZNAN UNIVERSITY OF
TECHNOLOGY
BIALYSTOK UNIVERSITY
OF TECHNOLOGY



BOSNIA

UNIVERSITY OF EAST SARAJEVO
SARAJEVO SCHOOL
OF SCIENCE & TECHNOLOGY
UNIVERSITY OF MOSTAR



ITALY

ACCADEMIA ALBERTINA DI BELLE
ARTI DI TORINO



SPAIN

UNIVERSITY OF VALLADOLID



GERMANY

IGCHE (INDO-GERMAN CENTER OF
HIGHER EDUCATION) REPRESENTED BY
WESTPHALIAN UNIVERSITY OF APPLIED
SCIENCES



CHINA

SICHUAN VOCATIONAL COLLEGE OF
INFORMATION TECHNOLOGY
GENGDAN INSTITUTE OF BEIJING
UNIVERSITY OF TECHNOLOGY
YUXI TECHNICIAN COLLEGE



JAPAN

KAKE EDUCATIONAL INSTITUTION
OKAYAMA UNIVERSITY
NAGASAKI WESLEYAN UNIVERSITY
MEISTER BIO CO. LTD.



MALAYSIA

MANIPAL INTERNATIONAL
UNIVERSITY



THAILAND

SIRINDHORN INTERNATIONAL
INSTITUTE OF TECHNOLOGY
STAMFORD UNIVERSITY



GLOBAL AFFAIRS & INTERNATIONAL RELATIONS

The Department of Global Affairs and International Relations has been instrumental in developing partnerships with various reputed universities across the globe. The activities of collaboration are:

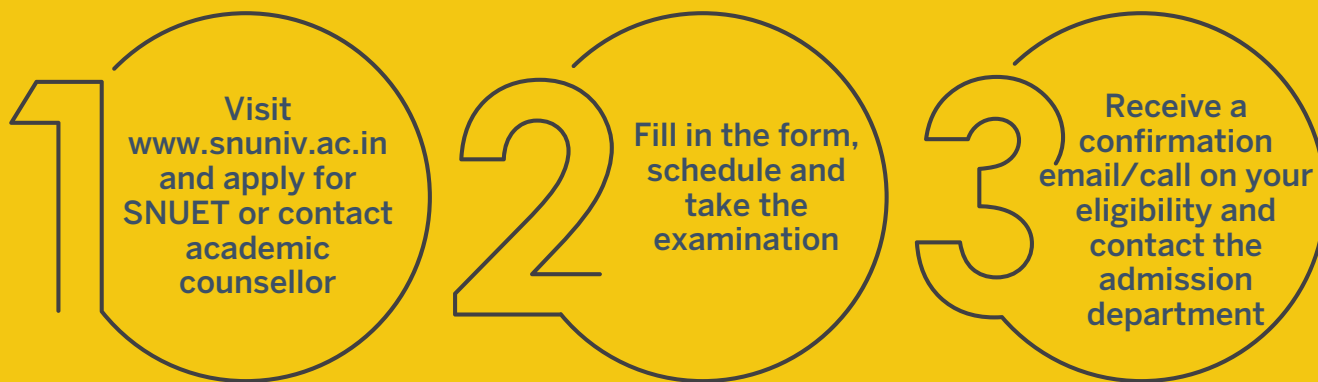
- ✧ Student and Faculty Exchange Programmes
- ✧ Cultural Exchange Programmes
- ✧ Collaborative Projects and Research
- ✧ Grants Innovation and Incubation
- ✧ Joint Summer and Winter Camps
- ✧ Setting up of Center of Excellence
- ✧ Workshops



www.snuniv.ac.in



ADMISSION IN 3 EASY STEPS



SCHOLARSHIPS AT SNU



**MERIT
SCHOLARSHIP**



**CHANCELLOR'S
MERIT CUM MEANS SCHOLARSHIP**



**TALENT
SCHOLARSHIP**

For more details visit us www.snuniv.ac.in

200+ Campus Drives

94% Students

42% Students grabbed

more than 2 Job Offers

Placed Overall

AS THE PRESS SEES US



PROUD TO BE AN “SNUITE”

Sister Nivedita University is one of the best universities to study and understand the importance of engineering. Here, the faculty takes a holistic approach in developing students for the industry as well as for higher studies. Our university also collaborates with various leader of the industry to provide leadership insights, practical knowledge and internships. Students are also given the freedom to choose from a wide variety of companies to take the first steps in establishing their careers.

Anurag Biswas , B.Tech(CSBS)



My journey with SNUIHM was wonderful and memorable. SNUIHM has given me opportunity to work with luxury brand like Taj Group of Hotels. I am immensely happy with the opportunity SNUIHM have provided me. Apart from all this I have been taught how to become a good human being. Hats of to you SNUIHM

Kaustav Nag , Hospitality and Tourism Management

I am really thankful to my university (Sister Nivedita University), especially the placement cell for giving me ample number of opportunities. The endeavour and enthusiasm of placement cell is very appreciable. Placement cell took a number of measures to ensure that students get properly placed and made best of opportunities available for us which led to my placement in Techno India Group Public School – Raiganj as a Special Educator. I wish good luck to the coming batches of my university.

Siddharthi Ganguly , M.Sc, in Applied Psychology (Clinical)



SOME OF OUR RECRUITERS



BYJU'S

Cognizant



VIACOM 18



ho!cho! Ogilvy



amazon.in

HITACHI
Inspire the Next

Disney Star

PROUD TO BE AN “SNUITE”

SNU has shaped my life. I have get the best placement in the Industry, presently I am with Disney Star. This has been the turning point of my life. The Department has shaped and moulded my life. Apart from regular classes we have been exposed to the best industry practices. The infrastructure is the best part of the University and also not to forget the ambience and the teacher-student relationship. These 2 years has been a another life in another family, full of learnings and opportunities.

Suchetana Dutta , M.A. Journalism and Mass Communication



SNU is one of the most vibrant campus you can ever have. thank my faculty members for providing me a placement at Planetspark.

Nitu Kumari , B.A. (Hons.), English

SNU is one of the reputed educational Institute. With the best set of faculties, SNU has guided me to prosper in my respective field and excel in it. I'm placed in EY which is one of the Big Four Accounting Firm as a Technology Consultant.

Debanita Kundu , MBA Finance



SOME OF OUR RECRUITERS



www.snuniv.ac.in



A Satyam Roychowdhury Initiative


SNU
SISTER NIVEDITA
UNIVERSITY

REINVENT YOURSELF

 /SisterNiveditaUniversity
 /sisterniveditauniversity
 @nivedita_sister
 @sisterniveditauniversity

SISTER NIVEDITA UNIVERSITY

DG1/2, NEW TOWN ACTION AREA-1,
KOLKATA-700156

 7595044470 / 7595044471 / 7595044472
TOLL FREE: 1800-2588-155

 7797003333